

Silver Series R.O. Booster Pump Line

The Silver Series R.O. Booster pump line streamlines our pump offering to three basic pump models, which meet the demands of most R.O. applications. And while the Silver Series R.O. Booster pump line exhibits the standard look, it inherits its pump-head design, performance and reliability of the SHURflo Gold Series pump which set the highest benchmark in the industry.

The Silver Series pump-head design, features a one piece-piston-diaphragm design proven to significantly reduced the potential for leaks as well as increased the life of the pump and a precision bypass system, which maintains a constant safe outlet pressure regardless of changes in incoming city water pressure. This enables your R.O. system engineers to design systems with precise product water quality and production rates.

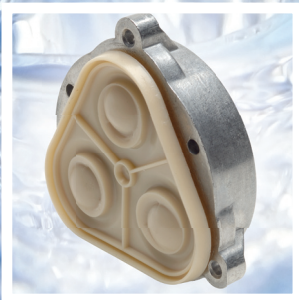


Precision bypass system provides constant outlet pressure



Features Include:

- ▶ Ultra quiet operation.
- ▶ Ideal for 50-150 GPD [190-570 LPD].
- ▶ Reliable, long lasting performance.
- ▶ Longest pump life in the industry.
- ▶ Patented diaphragm, and bypass design.
- ▶ 24VAC/24VDC



One-piece piston-diaphragm maximizes pump life

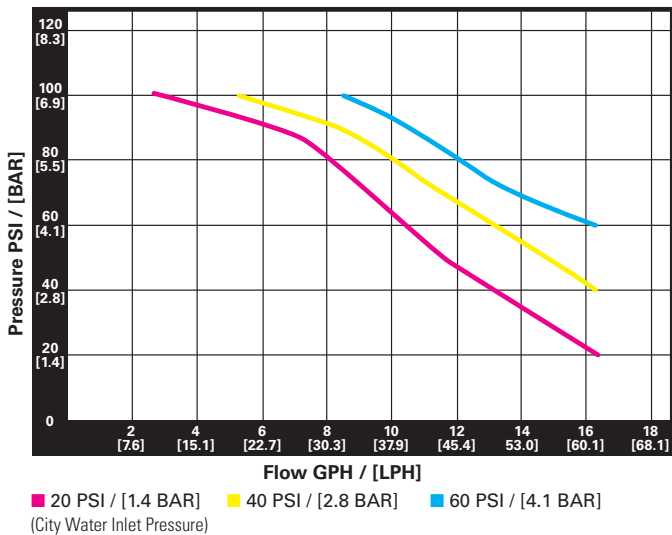
**The Silver Series R.O.
Booster pump line—SHURflo
Gold Performance & Quality
at a convenient price!**



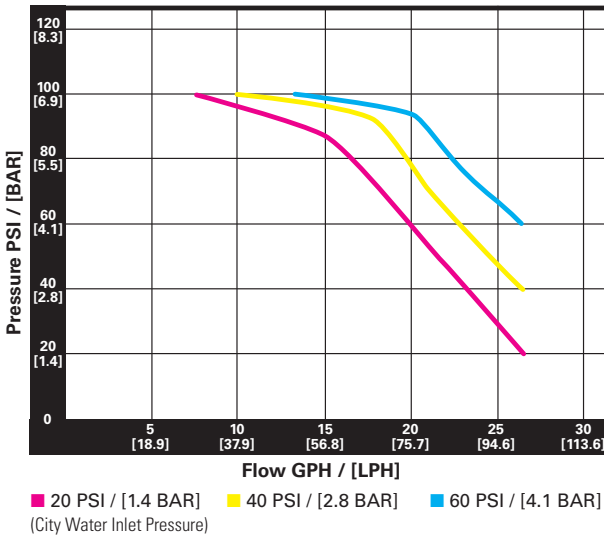
Silver Series R.O. Pump Performances

Note: GPD performance based on standard recovery rates

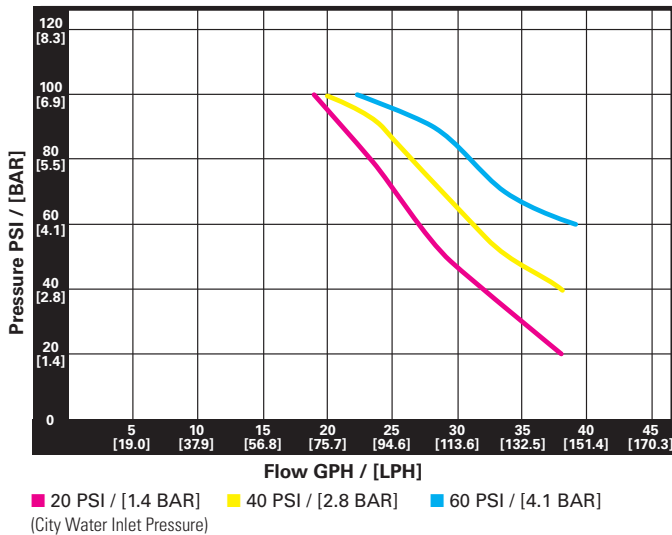
Performance: 8075-111-319 (50 GPD [190 LPD] Applications)



Performance: 8075-142-319 (100 GPD [380 LPD] Applications)



Performance: 8075-162-319 (150 GPD [570 LPD] Applications)



Specifications:

| | |
|---------------|--|
| Pump Design | Positive Displacement / 3 Chamber Solid Diaphragm Pump |
| Motor | 24 VAC Permanent Magnet |
| Max. Amp Draw | 0.7 Amps (8075-111-319) 1.75 Amps (8075-142-319) 2.5 Amps (8075-162-319) |
| Ports | 3/8" [10 mm] NPT Female |

Contact your SHURflo R.O. Pump Distributor:



Headquarters*
Mailing: 5900 Katella Ave.
Cypress, CA 90630
Shipping: 5900 Katella Ave., Bldg. C
Cypress, CA 90630
Tel: (562) 795-5200 or (800) 854-3218
Fax: (562) 795-7564
www.shurflo.com

East
52748 Park Six Court
Elkhart, Indiana 46514-5427
Tel: (800) 854-3218
Fax: (574) 264-2169

Europe
SHURflo Limited
Unit 5, Sterling Park
Gatwick Road, Crawley
West Sussex, RH10 9QT, UK
Tel: 44-(0) 1293-424000
Fax: 44-(0) 1293-421880