

### SPECIFICATIONS:

**MODEL NUMBER:** 8000-331-296

**PUMP DESIGN:** Positive Displacement 3 Chamber Diaphragm Pump

**CHECK VALVE:** (1-Way Operation) Prevents Reverse Flow

**CAM:** 2.0 Degree

**MOTOR:** Permanent Magnet, P/N 11-150-00, Thermally Protected

**VOLTAGE:** 115 VAC Nominal

**PRESSURE SWITCH:** Adjustable Shut-Off (Range 40-60 PSI)

Factory Set @ 60 PSI, Turn On 45 PSI  $\pm$  5 PSI

**LIQUID TEMPERATURE:** 170 Degrees Fahrenheit (77 Degrees Centigrade) Max.

**PRIME:** Self-Priming Up To 6.0 Ft. Vertical,  
Max. Inlet Pressure 30 PSI (2.1 Bar)

**PORTS:** 3/8"-18 NPT Female

**MATERIAL OF CONSTRUCTION:**

**PLASTICS-** Polypropylene

**VALVES-** Viton

**DIAPHRAGM-** Geolast (Main), Viton (Switch)

**FASTENERS-** Zinc Plated Steel

**NET WEIGHT:** 3.9 Lbs (1.77 Kg)

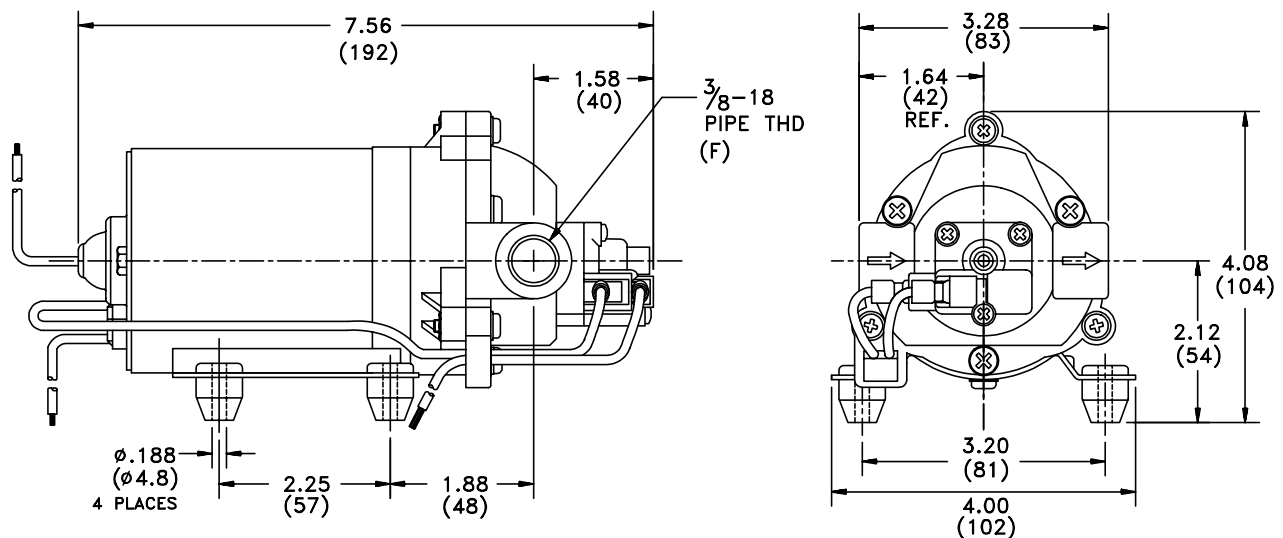
**DUTY CYCLE:** Intermittent (See Temperature Rise Chart)

**APPROVALS:** UL/CSA Recognized Component

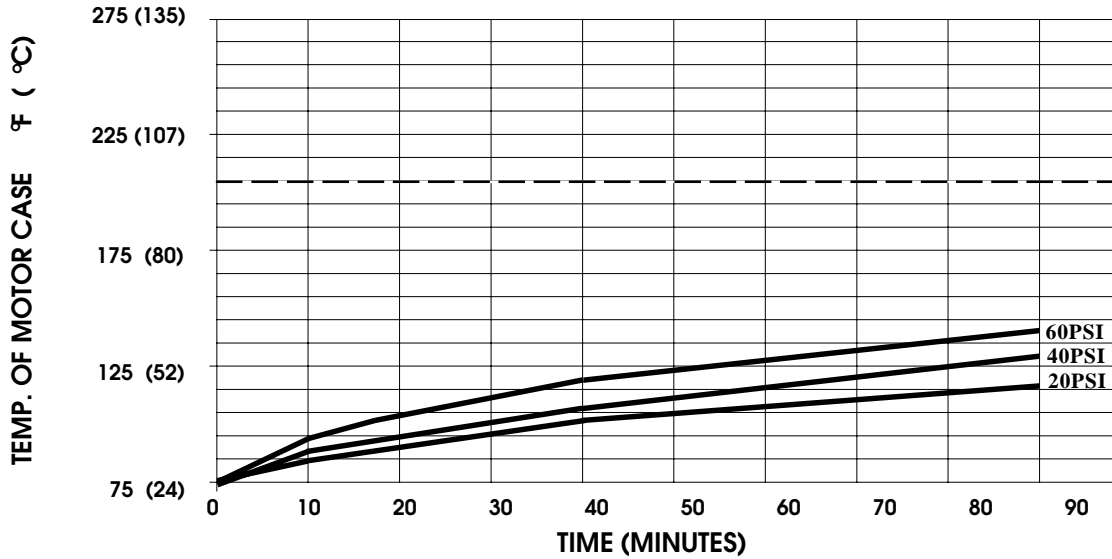
**TYPICAL APPLICATIONS:** Soil Extraction

**BYPASS:** 60 PSI Springs

### DIMENSIONS:



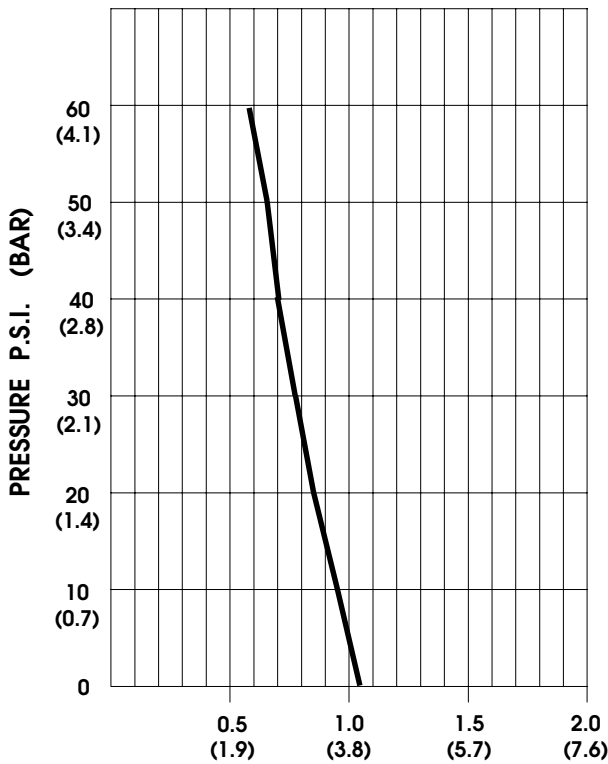
**TEMPERATURERISE**



THIS GRAPH IS FOR USE AS A DESIGN GUIDE. IT IS BASED ON RUNNING CONTINUOUSLY WITH AN AMBIENT TEMPERATURE OF 75° F IN STILL AIR. THE THERMAL BREAKER WILL OPEN WHEN THE CASE TEMPERATURE REACHES 205° F.

[----- TRIP POINT OF THERMAL PROTECTOR]

**TYPICAL PERFORMANCE**



PRESSURE (PSI)	FLOW (GPM/LIT)	RPM MIN/MAX	CURRENT (AMPS)	VOLTAGE (VOLTS)
OPEN	1.04/4.0	1160/1215	0.23	115VAC
10	0.95/3.6	1095/1165	0.28	"
20	0.84/3.2	1040/1130	0.33	"
30	0.77/2.9	990/1080	0.37	"
40	0.70/2.6	950/1045	0.42	"
50	0.65/2.4	905/1010	0.45	"
60	0.59/2.2	870/980	0.49	"

-SPECIFICATIONS SUBJECT TO CHANGE WITHOUT NOTICE.

-ALL DATA BASED ON TESTING WITH WATER AT AMBIENT TEMPERATURE.