

HARMSCO®

INV

Hurricane® Involute®

Industrial / Municipal

Up-Flow Filtration

A design so superior it's patented.

- Harmsco® Hurricane® Involute® filter housings provide unsurpassed performance. The Hurricane® technology design separates dense solids prior to cartridge filtration for extended filter life, increased dirt holding capacity and reduced operating costs.
- Patented Involute design ensures uniform filter cartridge loading throughout the filter housing.



Model: INV-72-8FL series

Features

- ▶ 304L stainless steel construction, standard
- ▶ Electropolished finish, standard
- ▶ 150 psi (10.3 bar) pressure rating
- ▶ Flow rates of up to 1,900 gpm
- ▶ All filter housings hydrostatically tested
- ▶ Accepts 40" L x 2.5" OD or 2.75" OD cartridges in DOE or 222/Fin configurations.
- ▶ Two drains provided - inlet and outlet liquids
- ▶ Extensive choice of cartridge micron ratings and sizes
- ▶ Integral mounting legs, drill in place

Options:

316 stainless steel
Sanitary, BSPT, or victaulic connections

Applications

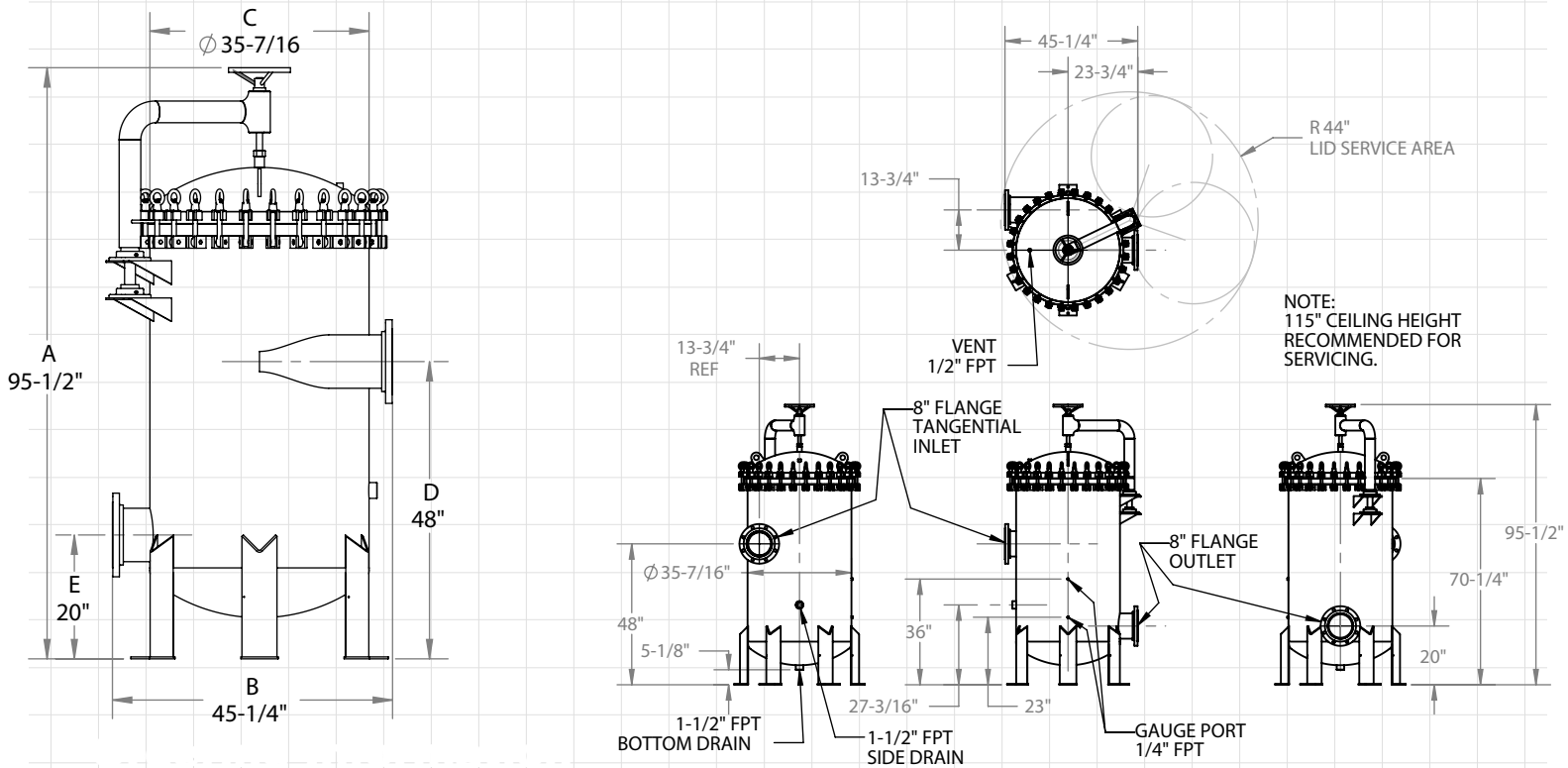
- ▶ Residential Drinking Water
- ▶ Cooling Tower Filtration
- ▶ Process Water
- ▶ Reverse Osmosis Pre-Filtration
- ▶ Ground Water Remediation
- ▶ Utility Water
- ▶ Municipal Waste Water Treatment
- ▶ Ground Water Under Direct Influence (GWUDI)



HARMSCO® Filtration Products



Made in USA



Filter Model	Max Flow Rate* (GPM)	Max Flow Rate* (LPM)	Max Flow Rate* (M ³ /Hr)	A Filter Ht	B Width	C Diameter	D Inlet	E Outlet	I/O Size	I/O Type	Drain Size	Weight (lbs)
INV-72-8FL-222	1900	7192	431	95.5"	45.25"	35.44"	48"	20"	8"	FLANGE	1.5" FPT	1308
INV-72-8FL-DOE	1900	7192	431	95.5"	45.25"	35.44"	48"	20"	8"	FLANGE	1.5" FPT	1308

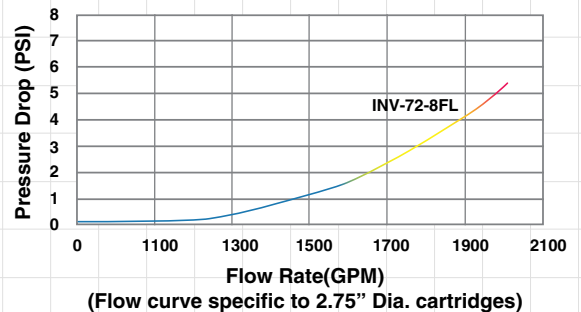
*Flow rates shown are for guidelines only. Actual flow rates are based on cartridge type, micron rating, viscosity, solids content and a number of other factors. For complete flow and pressure drop information please refer to your cartridge manufacturer guidelines.

Cartridge Styles

Harmsco® Involute® Cartridge Filter Housings are available with specific internal components which allow for the use of either DOE or 222 / Fin end cap cartridges.



Pressure Drop



- ▶ **Finish** - Electropolish standard
- ▶ **Inlet/Outlet** - 8" Flange; Connections optional
- ▶ **Closure** - Swing Bolt with Buna-N o-ring; EPDM or Viton o-ring optional.

- ▶ **Pressure** - Up to 150 psi (10.3 bar) max
- ▶ **Construction** - 304L stainless steel standard; 316L stainless or Duplex steel optional
- ▶ **Temperature** - up to 250°F (121°C), housing only.

Note: This publication is to be used as a guide. The data within has been obtained from many sources and is considered to be accurate. Harmsco does not assume liability for the accuracy and/or completeness of this data. Changes to the data can be made without notification. Temperature, Pressure, Flow Rates, Differential Pressures, Chemical Combinations and other unknown factors can affect performance in unknown ways. **Limited Warranty:** Harmsco warrants their products to be free of material and workmanship defects. Determination of suitability of Harmsco products for uses and applications contemplated by Buyer shall be the sole responsibility of Buyer. The end user/installer/buyer shall be liable for the product's performance and suitability regarding their specific intended applications. End users should perform their own tests to determine suitability for each application.



HARMSCO® Filtration Products

P.O. Box 14066, North Palm Beach, FL 33408

(561) 848-9628 • Toll-free: (800) 327-3248 • Fax: (561) 845-2474 • E-mail: sales@harmsco.com

www.harmsco.com



Made in USA

© 2013 Harmsco, Inc.